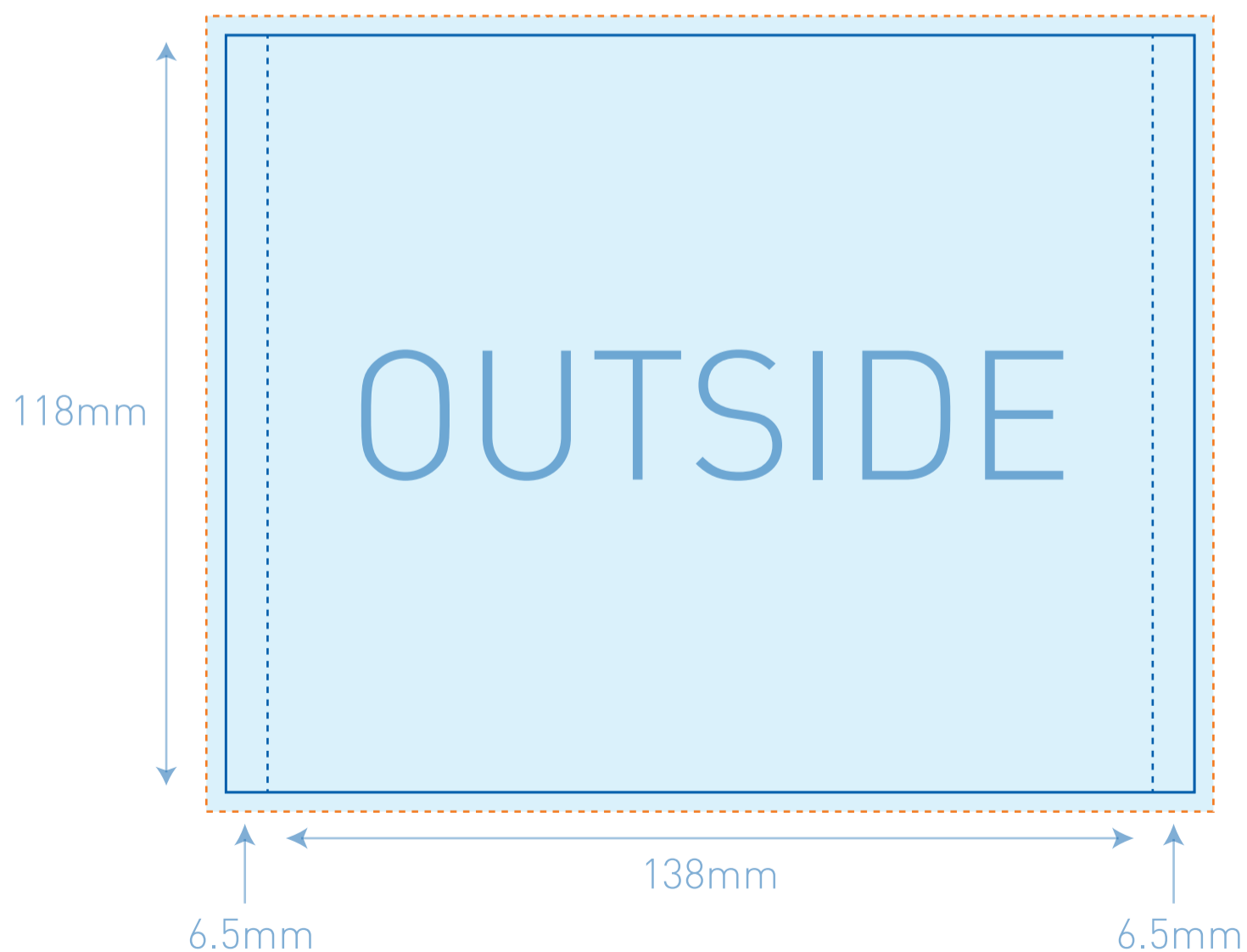
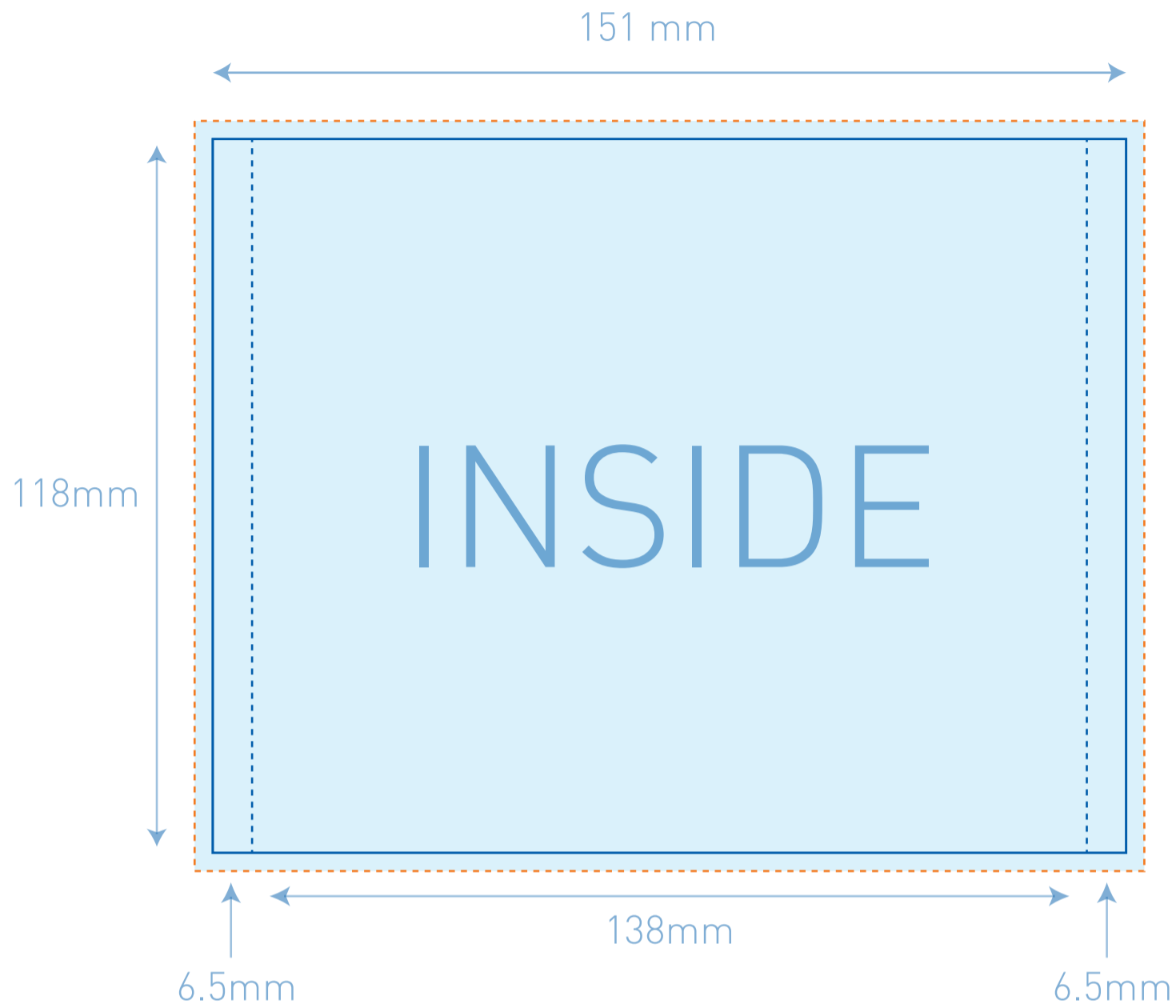


Jewel Case Traycard - 2 sided



GLMT.COM



Please keep your final artwork within the dark blue lines with a 3.5mm bleed to the orange dotted lines. Please keep in mind that the paper may shift slightly while printing and keep text and logos away from the cut lines.

This template is fully editable when opened in Adobe Illustrator.

If using this template in PhotoShop make sure the resolution is set to 300 when opening. Please keep this template on a separate layer and do not embed it in your art.

If supplying this piece, please contact us for paper requirements. We also require a pdf proof prior to production to ensure the piece is designed to spec and art is orientated properly.

- Cut Lines
- Fold Lines
- Have art bleed to here
- Printable Area



We have eco-friendly options available for you. Please ask us for more information.

Template #
Jewel Case Traycard - 2 sided

Finished Size:
151mm x 118mm

OVERVIEW

